



GAT MONTHLY MEMBERSHIP PROGRESS REPORT

Results as of: 12/31/2021

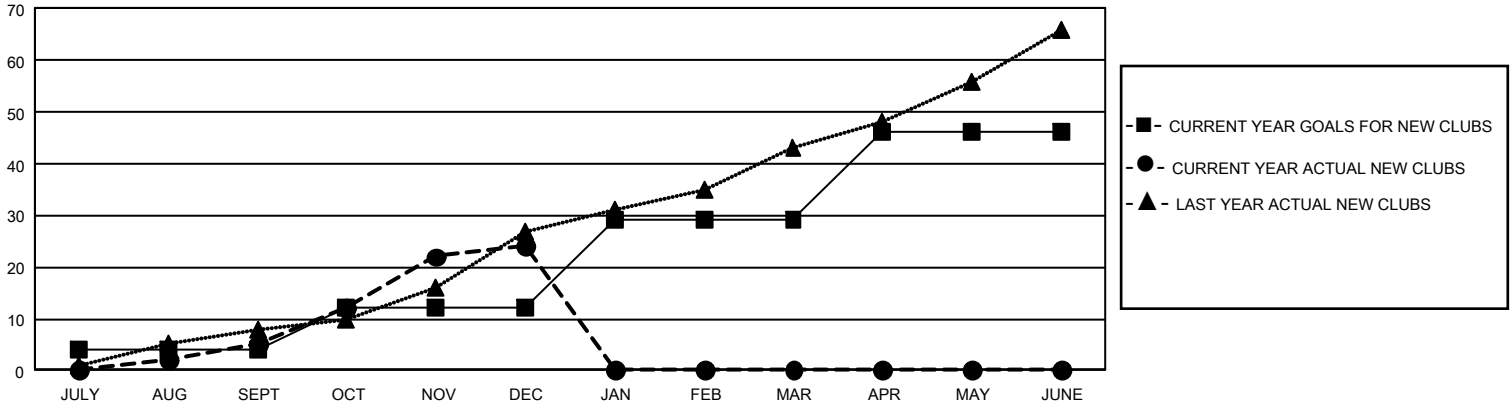
GAT Constitutional Area 7

REPORT DOES NOT INCLUDE CLUBS IN UNDISTRICTED AREAS.

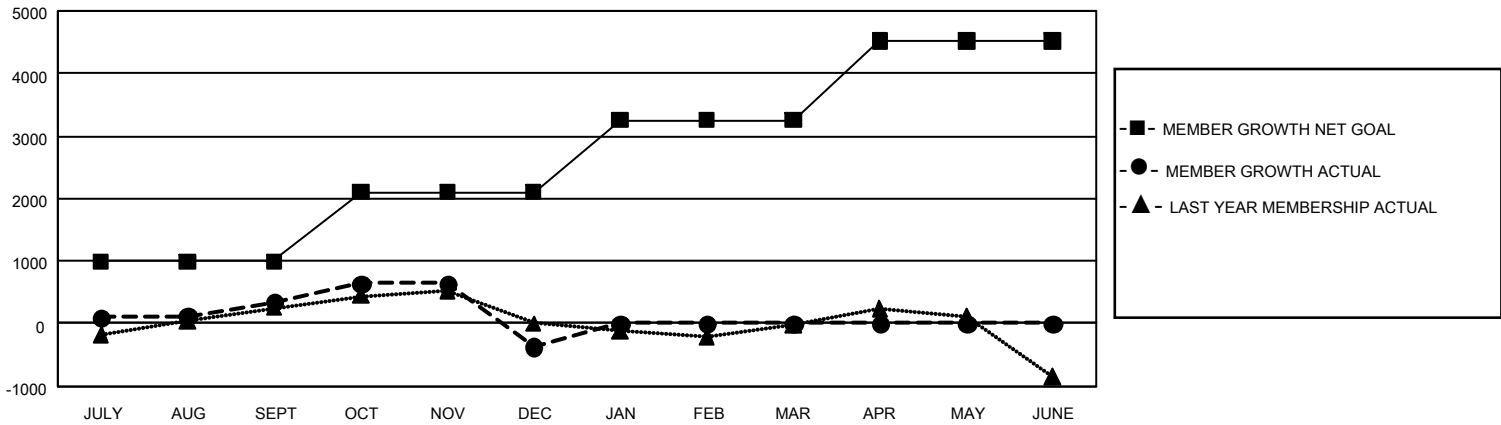
Clubs			
RESULTS FOR 2021-2022			
QUARTER	NEW CLUB GOAL	NEW CLUBS	DROPPED CLUBS
JULY/AUG/SEPT	12	5	30
OCT/NOV/DEC	24	19	9
JAN/FEB/MAR	51	0	0
APR/MAY/JUNE	51	0	0

Members			
RESULTS FOR 2021-2022			
QUARTER	MEMBER GROWTH NET GOAL	MEMBER GROWTH ACTUAL	DROPPED MEMBERS ACTUAL (including transfers)
JULY/AUG/SEPT	996	1,502	1,003
OCT/NOV/DEC	1105	1,576	2,165
JAN/FEB/MAR	1149	0	0
APR/MAY/JUNE	1270	0	0

GOALS AND ACTUAL NEW CLUBS CUMULATIVE



GOALS AND ACTUAL MEMBERS CUMULATIVE



DROPPED CLUBS: 39	
DROPPED MEMBERS	
DECEASED	265
CLUB CANCELLED	136
OTHER	2,767
TOTAL	3,168

824 CLUBS OF 1,886 ADDED 1 OR MORE NEW MEMBERS

[CLICK HERE FOR CUMULATIVE MEMBERSHIP DATA](#)

GENDER DISTRIBUTION	
MALE	25,192 (59.35%)
FEMALE	17,251 (40.64%)
NON BINARY	2 (0.00%)
PREFER NOT TO ANSWER	1 (0.00%)
TOTAL FAMILY UNIT MEMBERS	7,212
FAMILY MEMBERS PAYING HALF DUES	3,870